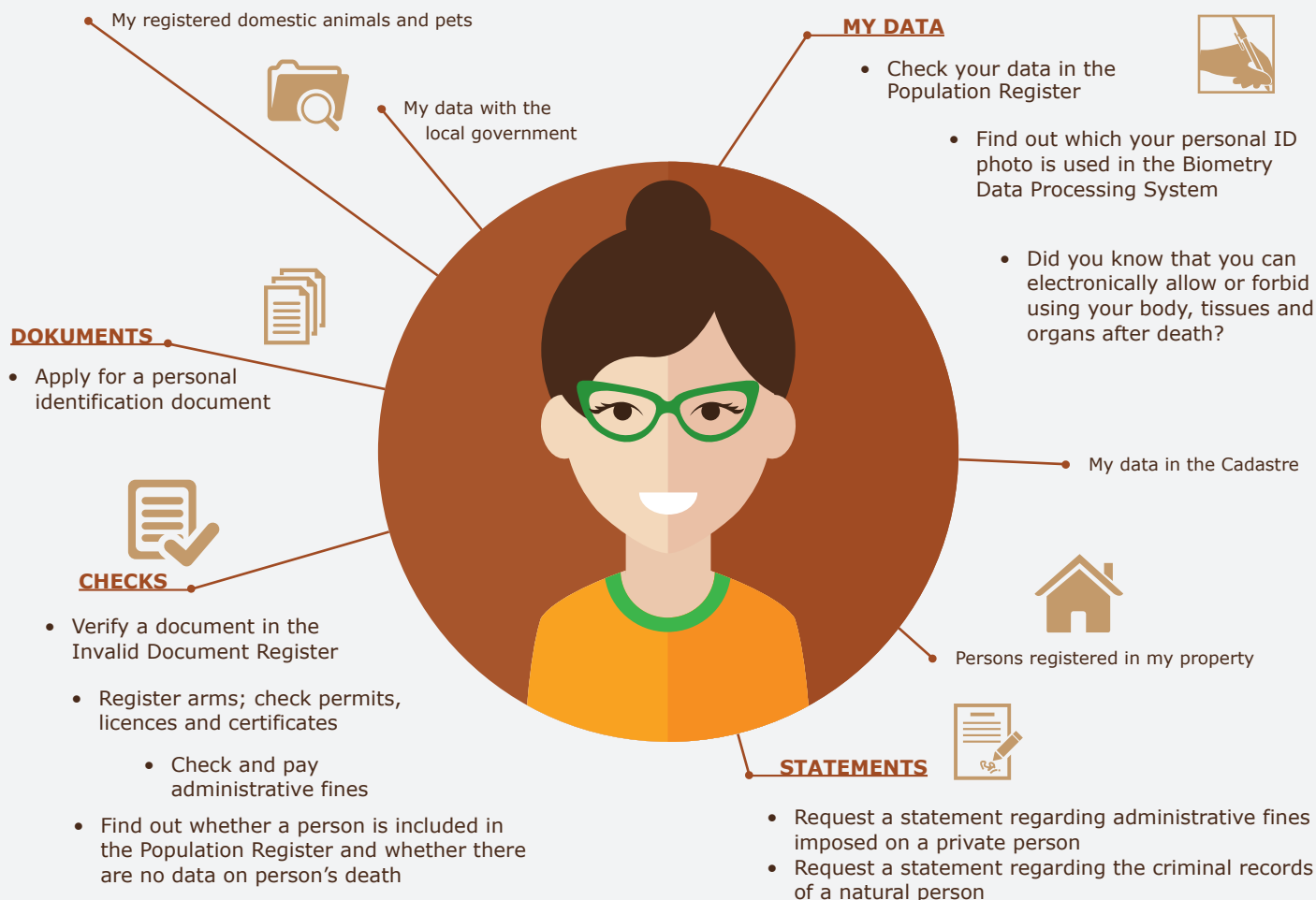
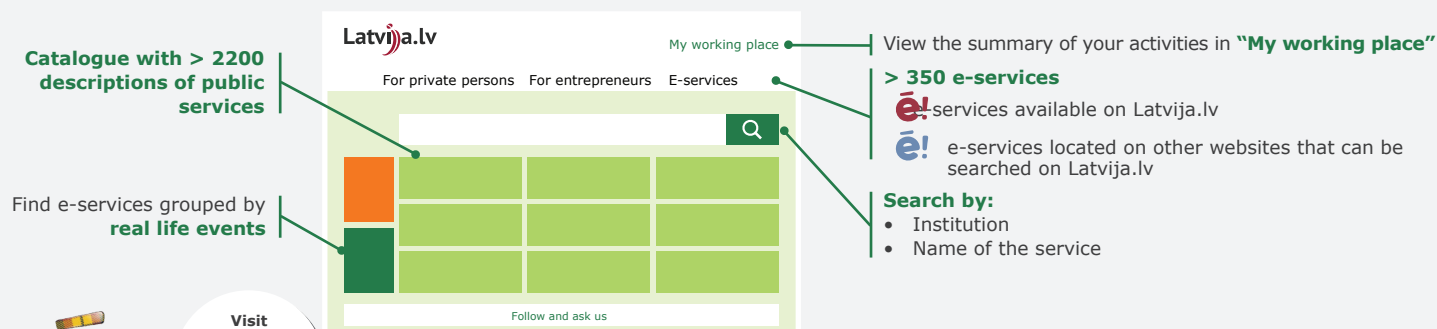


WHAT CAN I FIND OUT ABOUT MYSELF BY USING Latvija.lv E-SERVICES?



How to use Latvija.lv?



- Before visiting an institution in person, check if a service is available on the Internet
- Should any doubts or uncertainty arise, do not be afraid to ask the Portal User Support Service for advice
- E-services are secure, if personal precaution is ensured

Portal User Support Service: T.: 67502757 | E.: portals@vraa.gov.lv | W.H.: Weekdays 08:30 - 16:30